

# Platform Stacker HL-PS Series

**▲ Simple and Easy Operation.**

- Lifting movement via collapsible foot pedal.
- Sensitive lowering through sinking valve.
- Hand push drive.
- Overload protection via pressure valve.

**▲ Safe Operation and secure Working Conditions.**

- Stable chassis with 2 frame rollers and 2 steering rollers.

**▲ Long Service Life.**

- Robust construction.
- Hard chromium plated frame.
- Hardened chromium plated ram.

**▲ Effortless Movement.**

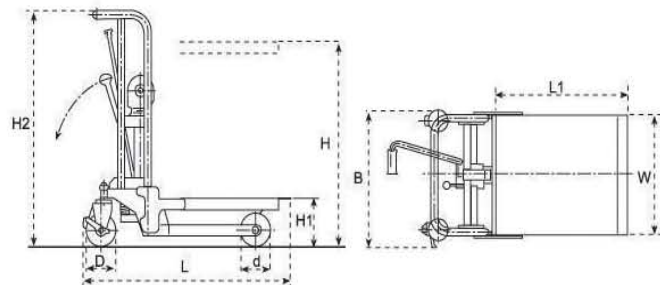
- Ball bearing rollers.
- Polyurethane rollers.

**▲ No-marking castor as standard.**

**▲ Conforms to EN 1757-1:2001.**



**Noise-free Castor as option.**



Option Ladder Model: LD100  
 Note: Operator must turn two brakes on before step on ladder!

Model		HL-PS2085	HL-PS2120	HL-PS4085	HL-PS4120	HL-PS4150
Capacity	(kg)	200	200	400	400	400
Max. Platform Height	H (mm)	850	1200	850	1200	1500
Min. Platform Height	H1 (mm)	200	200	200	200	200
Platform Length	L1 (mm)	600	600	650	650	650
Platform Width	W (mm)	500	500	550	550	550
Total Length	L (mm)	940	940	1040	1040	1040
Total Width	B (mm)	560	560	590	590	590
Total Height	H2 (mm)	960	1310	970	1310	1610
Steering Rollers-diameter	D (mm)	Φ125	Φ125	Φ150	Φ150	Φ150
Frame Rollers-diameter	d (mm)	Φ125	Φ125	Φ150	Φ150	Φ150
Pump Strokes to Max. Height		14	21	30	45	58
Net Weight	(kg)	53	58	72	78	83
Noise-free Castor		O	O	O	O	O

O = Option

# Fork Type Stacker HL-PF/PJ Series

- ▲ Low profile forks can lift pallet easily.
- ▲ Ladder as option.
- ▲ **No-marking castor as standard.**
- ▲ **Conforms to EN 1757-1:2001.**



**Noise-free Castor as option.**

**Option platform  
Model: LP10, LP20**



**HL-PJ Series  
Adjustable Fork**



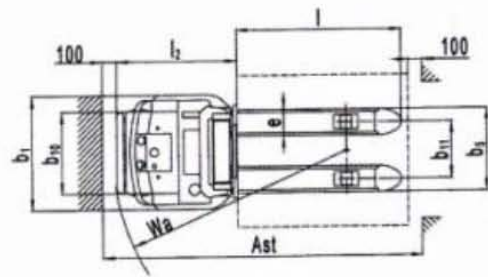
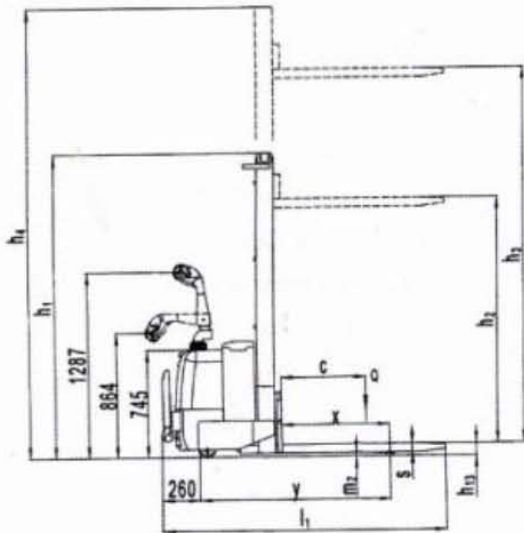
**HL-PF Series  
Fixed Fork**

Model (Fixed Fork)		HL-PF2085	HL-PF2120	HL-PF4085	HL-PF4120	HL-PF4150
Model (Adjustable Fork)		HL-PJ2085	HL-PJ2120	HL-PJ4085	HL-PJ4120	HL-PJ4150
Capacity	(kg)	200	200	400	400	400
Max. Fork Height	(mm)	850	1200	850	1200	1500
Min. Fork Height	(mm)	85	85	85	85	85
Fork Length	(mm)	600	600	650	650	650
Fixed Fork Width (PF series)	(mm)	500	500	550	550	550
Adjustable Fork Width (PJ series)	(mm)	215-500	215-500	235-500	235-500	235-500
Load Roller	(mm)	Φ75	Φ75	Φ75	Φ75	Φ75
Steering Wheel	(mm)	Φ125	Φ125	Φ125	Φ125	Φ125
Pump Strokes to Max. Height		19	26	35	50	63
Overall Height	(mm)	1080	1435	1060	1410	1710
Overall Width	(mm)	560	560	590	590	590
Overall Length	(mm)	1000	960	1040	1040	1040
Net Weight	PF series (kg)	55	62	70	76	82
	PJ series (kg)	58	65	75	81	85
Option Platform		LP10	LP10	LP20	LP20	LP20

## Electric Stacker CDD series

- Heavy duty design with top quality mast construction.
- Top quality electric control system from Curtis
- With high quality power pack and drive wheel.
- Drive unit with electromagnetic brake.
- With REMA Ergonomic tiller from Germany.
- Verticle driving wheel for easy steering.
- Conforms to EN 1757-1:2001,EN1726





Model		CDD1033	CDD1533
Drive		Electric	Electric
Type of operation		Pedestrian	Pedestrian
Capacity	KG	1000	1500
Load centre	c(mm)	600	600
Load distance	x(mm)	765	765
Wheel base	y(mm)	1265	1265
Net Weight	KG	975	1050
Front Roller	(mm)	Polyurethane 80x70	
Rear Roller	(mm)	Polyurethane 230x75	
Additional wheels		Polyurethane 124x60	
Dimension	b10(mm)	575	575
	b11(mm)	395	395
	h1(mm)	2175	2175
	h2(mm)	1600	1600
	h3(mm)	3300	3300
	h4(mm)	3795	3795
	h14(mm)	925/1365	925/1365
	h13(mm)	92	92
	l1(mm)	2015	2015
	l2(mm)	865	865
	b1(mm)	815	815
	s/e/l(mm)	60/180/1150	60/180/1150
	b5(mm)	575	575
	m2(mm)	28	28
Pallet 1000x1200 crossways	Ast(mm)	2294	2294
Pallet 800x1200 crossways	Ast(mm)	2441	2441
Turning radius	Wa(mm)	1650	1650
Travel speed,laden/unladen	km/h	4/5.5	4/5.5
Lift speed,laden/unladen	mm/s	65/110	65/110
Lowering speed,laden/unladen	mm/s	70/65	70/65
Max.gradient performance,laden/unladen	%	5/10	5/10
Service brake		Electromagnetic	Electromagnetic
Drive motor	KW	1.2	1.2
Lift motor	KW	2.2	2.2
Battery	V/Ah	24/220	24/220
Type of drive control		Mosfet control	Mosfet control
Sound level at driver's ear	dB(A)	67	67

## Semi-Electric Stacker MMS series

- ▲With highly efficiency  
After charging the battery, could lift full capacity up and down more than 70 times.
- ▲With Low-voltage protection device
- ▲Standard Traction battery:12 V/150Ah;
- ▲With High quality built in charger;
- ▲With double front wheel, more stable;
- ▲Conforms to EN1757-1:2001,EN1727



Model		MSS1016	MSS1025	MSS1029	MSS1031	MSS1033
Capacity	kg	1,000	1,000	1,000	1,000	1,000
Fork length	MM	1,150	1,150	1,150	1,150	1,150
Fork width	MM	540	540	540	540	540
Power pack	KW	1.5kw	1.5kw	1.5kw	1.5kw	1.5kw
lifting speed without load		95mm/s	95mm/s	100mm/s	105mm/s	110mm/s
lifting speed with full load		70mm/s	75mm/s	75mm/s	75mm/s	80mm/s
Traction Battery		12 V/150Ah	12 V/150Ah	12 V/150Ah	12 V/150Ah	12 V/150Ah
Steering wheel size/MM		180*50	180*50	180*50	180*50	180*50
Front wheel size	MM	80*70	80*70	80*70	80*70	80*70
Charger		12V20A	12V20A	12V20A	12V20A	12V20A

## Semi-Electric Stacker HL-MS series

- Heavy duty design and top quality mast construction.
- Safety guard on load roller and steering wheel.
- Light and easy manual steering system.
- Steppless speed of lifting/lowering.
- Conforms to EN1757-1:2001,EN1727.



Model		HL-MS1016	HL-MS1024	HL-MS1029	HL-MS1031	HL-MS1033
Capacity	Kg	1000	1000	1000	1000	1000
Lifting Height	Mm	1600	2450	2900	3100	3300
Lifting Speed (with/without load)	mm/s			95/127		
Power Pack	W			1500		
Battery (Service free)	Ah/V			120Ah/12V		
Battery Charger	A/V			12A/12V		
Steering Wheel	Mm			Ø180×50		
Load Roller	Mm			Ø82×70		
Overall Length	Mm			1820		
Overall Width	Mm	800	800	800	1000	1000
Overall Height	Mm	2090	1800	2025	2125	2225
Net Weight (with battery)	Kg	480	540	580	595	610

# Semi-Electric Stacker MW series

with straddle leg

- ▲ Heavy duty design with quality mast construction.
- ▲ Straddle leg design suitable for two faces or low pallet.
- ▲ Safety guard on load roller and steering wheel.
- ▲ Light and easy manual steering system.
- ▲ High quality trouble free power pack.
- ▲ **Conforms to EN1757-1: 2001, EN1727.**



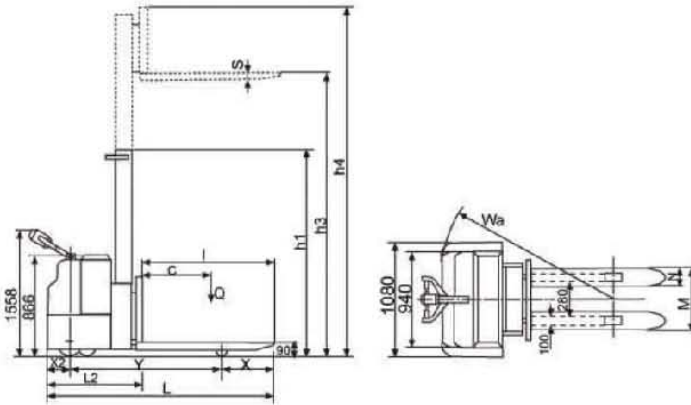
**MW1029**

Model		MW1016	MW1024	MW1029	MW1031	MW1033
Capacity	(kg)	1000	1000	1000	1000	1000
Max. Fork Height	(mm)	1600	2450	2900	3100	3300
Min. Fork Height	(mm)	65	65	65	65	65
Load Centre	(mm)	500	500	500	500	500
Fork Length	(mm)	1000	1000	1000	1000	1000
Fork Width	(mm)	Adjustable 230-790	Adjustable 230-790	Adjustable 230-790	Adjustable 230-790	Adjustable 230-790
Leg Width (inside)	(mm)	1270	1270	1270	1270	1270
Lifting Speed	With Load (mm/s)	95	95	95	95	95
	Without Load (mm/s)	127	127	127	127	127
Power Unit	(W)	1500	1500	1500	1500	1500
Battery	(Ah/V)	120/12	120/12	120/12	120/12	120/12
Battery Charger	(A/V)	12/12	12/12	12/12	12/12	12/12
Steering Wheel	(mm)	Φ180×50	Φ180×50	Φ180×50	Φ180×50	Φ180×50
Load Roller	(mm)	Φ82×70	Φ82×70	Φ82×70	Φ82×70	Φ82×70
Overall Length	(mm)	1674	1710	1674	1674	1674
Overall Width	(mm)	1502	1505	1502	102	1502
Overall Height	(mm)	2090	1800	2000	2125	2225
Net Weight (with battery)	(kg)	482	552	573	582	592

Option: Fixed fork 540x1150mm

## Full Electric Stacker HL-FE series

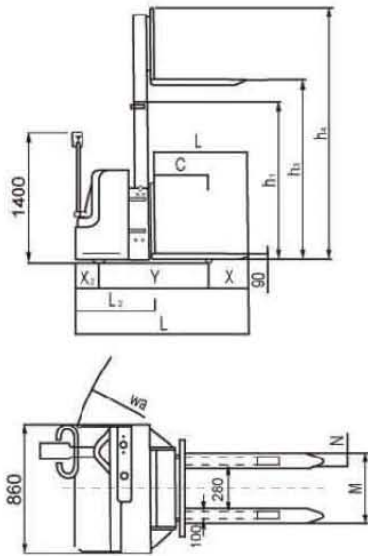
- Heavy duty range for tough application.
- Top quality electronic control system from Curtis.
- Powerful power pack and drive wheel are made in Europe.
- Drive unit with electromagnetic brake.
- AC Version is available
- **Conforms to EN1757-1:2001, EN1726.**



Model		HL-FE1216	HL-FE1224	HL-FE1229	HL-FE1231	HL-FE1233
		HL-FE1516	HL-FE1524	HL-FE1529	HL-FE1531	HL-FE1533
Capacity	(kg)	1200	1200	1200	1200	1200
Lifting Height	h3 (mm)	1500	1500	1500	1500	1500
Min. Fork Height	h (mm)	1600	2450	2900	3100	3300
Load Centre	C (mm)			90		
Fork Length	l (mm)			600		
Fork Width	M (mm)			1150		
Travelling Speed		540				
Lifting Speed		without Load 5.5 km/h, With Full Load 4.8 Km/h				
Lowering Speed		without Load 144 mm/s, With Full Load 95 mm/s				
Motors Traveling	(KW/V)	without Load 150 mm/h, With Full Load 65 mm/s				
Motors Lifting	(KW/V)	1.2/24			2.2/24	
Battery (service free)	(Ah/V)	200/24				
Battery Charger	(A/V)	20/24				
Front Roller	(mm)	Ø78x70				
Rear Roller	(mm)	Ø150x75				
Drive Wheel	(mm)	250x80				
Net Weight	(kg)	614	670	692	705	714
Dimension	X (mm)	460				
	S (mm)	56				
	X2 (mm)	200				
	Y (mm)	1270				
	L2 (mm)	780				
	L (mm)	1930				
	N (mm)	160				
	h1 (mm)	2090	1800	2025	2125	2225
	h4 (mm)	2244	3094	3544	3744	3944
	B (mm)	940	940	940	1080	1080

# Full Electric Stacker HL-FN series

- Tiller arm is mounted on one side for optimum control and visibility.
- High-comfort tiller grip reduces fatigue, improving productivity.
- Heavy-duty design with top quality mast construction.
- Powerful drive and power unit made in Europe.
- Top quality electronic control system from Curtis.
- Multi-function handle includes crawl button, butterfly travel speed controls and lift/lower control offer variable speed adjustment.
- AC Version is available
- **Conforms to EN1757-1:2001, EN 1726.**



Model		HL-FN1225	HL-FN1229	HL-FN1233	HL-FN1525	HL-FN1529	HL-FN1533
Capacity	(kg)		1200			1500	
Lifting Height	(mm)	2450	2900	3300	2450	2900	3300
Min. Fork Height	(mm)		90			90	
Load Centre	(mm)		600			600	
Fork Length	(mm)		1150			1150	
Fork Overall Width	(mm)		540			540	
Driver Wheel		Ø250mm, 1200W/24V					
Power Pack	(KWH)	2.2/24					
Traction Battery	(Ah/V)	165/24					
Net Weight	(kg)	648	670	691	658	680	701
Dimension	X2(mm)	190					
	L2(mm)	774					
	h1(mm)	1800	2025	2025	1800	2025	2025
	h4(mm)	3094	3546	3946	3096	3546	3946
	X(mm)	455					
	Y(mm)	1279					
	L(mm)	1924					
	N(mm)	160					
	h3(mm)	2450	2900	3300	2450	2900	3300
	Wa(mm)	1540					

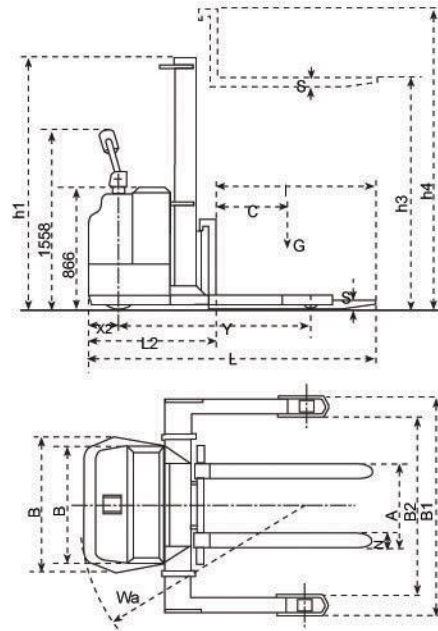


# Electric Stacker With Straddle Leg FW / FW

With DC or AC technology

- ▲ Heavy duty design with top quality mast construction.
- ▲ Straddle leg design suitable for two faces or low pallet.
- ▲ Powerful power pack with European technology.
- ▲ Drive unit with electromagnetic brake.
- ▲ Top quality electronic control system from Curtis.
- ▲ Conforms to EN1757-1, EN 1726.

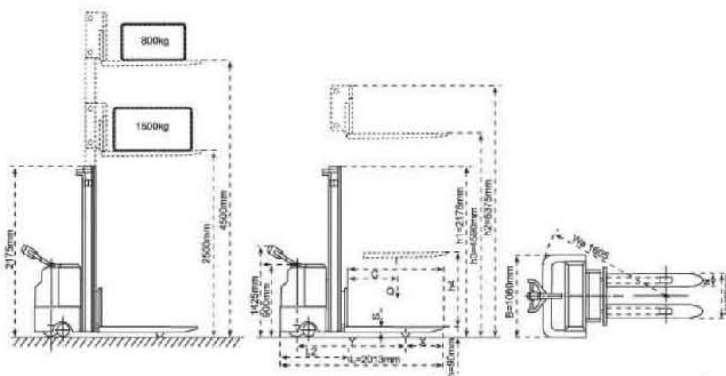
### Option



Model	FW1216	FW1516	FW1224	FW1524	FW1229	FW1529	FW1231	FW1531	FW1233	FW1533	
Model	FW1216AC	FW1516AC	FW1224AC	FW1524AC	FW1229AC	FW1529AC	FW1231AC	FW1531AC	FW1233AC	FW1533AC	
Capacity (kg)	1200	1500	1200	1500	1200	1500	1200	1500	1200	1500	
Lifting Height h3 (mm)	1600	1600	2450	2450	2900	2900	3100	3100	3300	3300	
Min. Fork Height h (mm)	65										
Load Centre C (mm)	500										
Fork Length l (mm)	1000										
Motors Traveling (KW/V)	1.2/24										
Motors Lifting (KW/V)	2.2/24										
Service Free Battery	200Ah/24V										
Battery Charger	20A/24V										
Traction Battery (option)	240Ah/24V										
Front Roller (mm)	Polyurethane, Tandem $\Phi$ 78x70mm										
Rear Roller (mm)	Polyurethane, $\Phi$ 150x75mm										
Drive Wheel (mm)	Polyurethane, $\Phi$ 250x80mm										
Net Weight (kg)	820	820	885	885	895	895	905	905	910	910	
Dimension	S (mm)	38	38	38	38	38	38	38	38	38	
	X2 (mm)	200	200	200	200	200	200	200	200	200	
	Y (mm)	1283	1283	1283	1283	1283	1283	1283	1283	1283	
	L2 (mm)	792	792	792	792	792	792	792	792	792	
	L (mm)	1792	1792	1792	1792	1792	1792	1792	1792	1792	
	B1 (mm)	1197-1502	1197-1502	1197-1502	1197-1502	1197-1502	1197-1502	1197-1502	1197-1502	1197-1502	1197-1502
	B2 (mm)	965-1270	965-1270	965-1270	965-1270	965-1270	965-1270	965-1270	965-1270	965-1270	965-1270
	A (mm)	230-790	230-790	230-790	230-790	230-790	230-790	230-790	230-790	230-790	230-790
	N (mm)	100	100	100	100	100	100	100	100	100	100
	h1 (mm)	2166	2166	1876	1876	2101	2101	2201	2201	2301	2301
	h3 (mm)	1600	1600	2450	2450	2900	2900	3100	3100	3300	3300
	h4 (mm)	2460	2460	3310	3310	3760	3760	3960	3960	4160	4160
	B (mm)	940	940	940	940	940	940	1080	1080	1080	1080
Wa (mm)	1533	1533	1533	1533	1533	1533	1548	1548	1548	1548	

# Full Electric Stacker HL-FK/BK series

- Heavy duty design with top quality mast construction.
- Top quality electronic control system from Curtis.
- **Conforms to EN1757-1:2001, EN 1726.**



Model		HL-FK1545	HL-BK1545	HL-BKW1555
Type		without platform	Platform	Platform/straggle leg
Capacity	(kg)		1500	
Load Centre	(mm)		600	
Max. Fork Height	(mm)	4500		5500
Lowered Fork Height	(mm)		90	
Full Free Lifting Height	(mm)	1550		1717
Fork Length	(mm)	1150		1000
Fork Overall Width	(mm)	560		200-950
Fork Individual Width	(mm)		160	
Travelling Speed ( with/without load)	(km/h)		5.2/6.8	
Lifting Speed (with/without load)	(mm/s)		127/170	
Lowering Speed	(mm/s)	150/128		127/170
Motors Travelling	(W)		1200	
Motors Lifting	(W)		3000	
Front Roller, Tandem	(mm)		Ø78x70	
Rear Roller	(mm)		Ø150x50	
Driver Wheel	(mm)		Ø250x80	
Traction Battery	(Ah/V)		240/24	
Battery Charger	(A/V)		30/24	
Weight of battery	(kg)		230	
Overall Dimensions	(mm)	2013x1080x2175	2507x1080x2175	2507x940x2175
Net Weight (without battery)	(kg)	1010	1035	1370