

### C. Ratchet Beam Jacks

- Ratchet screw design, reversible.
- Reflective collar and safety yellow painting.



HL-TJ60A

Model	HL-TJ60	HL-TJ60A
Service Range (in.)	39½-51	39½-51
Static Capacity (lbs/ tonne)	100000/45	80000/36
Lifting Capacity (lbs/ tonne)	50000/22.7	40000/18
Cap Size	6"wide x 24"ong	6"wide x 24"ong
Base Plate	15"triangular	16"triangular
Wheel Dia.	8"semi-pneumatic, 4"emi-steel	10"solid rubber, 4"emi-steel
Net Weight (lbs/ kg)	195/88.5	180/82

### D. Economy Trailer Stabilizing Jack

- ACME threaded screw design.
- Reflective collar and safety yellow painting.



HL-TJ70



HL-TJ70A

Model	HL-TJ70	HL-TJ70A
Service Range (in.)	44-51	44-51
Static Capacity (lbs/ tonne)	50000/22.7	50000/22.7
Lifting Capacity (lbs/ tonne)	none	none
Cap Size	5"x 5"square	5"x 5"square
Base Plate	14"diameter	14"diameter
Net Weight (lbs/ kg)	45/20.5	45/20.5

# Stabilizing Jack

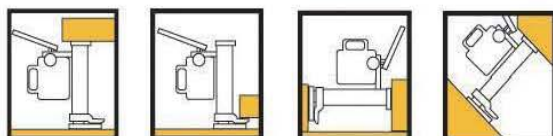
- ▲ The jack could keep a trailer level when disconnected from the tractor, or when it is parked on the sloping ground.
- ▲ It is very easy to handle the jack by two wheel system.
- ▲ Five-step adjustment range, adjustment distance is 50mm.



Model		JK15
Capacity	tonne	15
Min. Height	mm	1070
Max. Height	mm	1270
Adjustment range	mm	200
Wheel, polyurethane	mm	200x50
Support head length	mm	1200
Total length	mm	1750
Total width	mm	590
Net weight	kg	83

## Hydraulic Jack HL-M Series

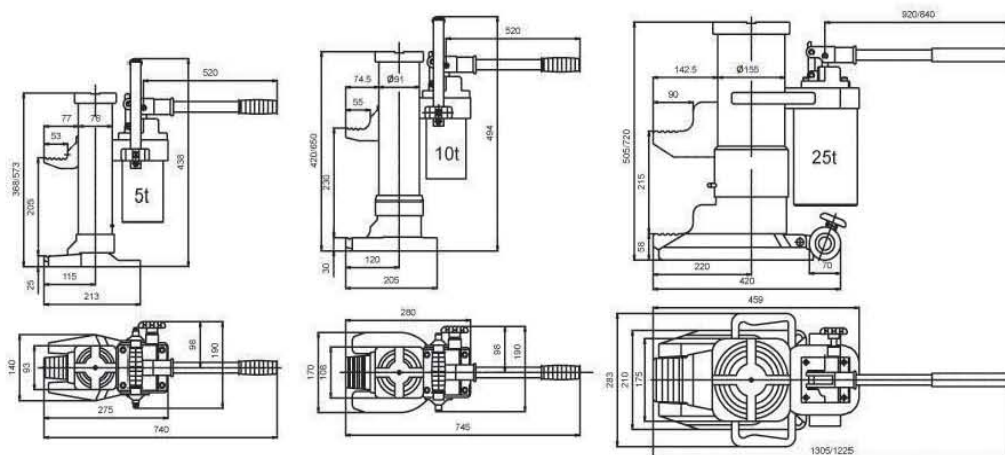
- Compact and stable construction.
- Can be used in any position.
- Housing revolves 360 degrees.
- Lowering speed can be accurately adjusted.
- Protected against overloading.
- Pump lever is removable.
- **According to CE and US standard USA ASME/ANSI B30.1.1986.**



### CAUTIONS

**To avoid possible personal injury or damage to equipment**

- Do not exceed the maximum load capacity of the jack.
- Do not add additional load to a lifted load.
- Do not use in unstable or hazardous positions.
- Unit must be used on flat surfaces able to carry the load.
- The load must be stable during lifting.
- An unstable load may cause the jack or load to slip.
- Do not use jack(s) if damaged, altered or in poor condition.
- Do not lift people or loads with people on them.
- Do not lift at the end of the toe. Fully engage the load with the toe.



Type	Capacity (tonne)	Lifting Range of Foot (mm)	Lifting Range of Head (mm)	Max. Lever Force (kg)	Net Weight (kg)
HL-M50	5	25-230	368-573	38	25
HL-M100	10	30-260	420-650	40	35
HL-M250	25	58-273	505-720	40	102

## Steel Jack HVS/HKB series

- steel jacks HVS and HKB are developed in accordance with the latest safety regulations. With milled rack, geared wheels and tempered parts of driving gear.
- In accordance with DIN 7355 (type HVS).
- Suitable for lifting loads of any type.
- With lifting body.
- Safety crank with folding handle.
- type HKB comes with low body height.
- Lifting either with fixed toe or on clawed head.
- All construction components standardized.
- Low expenditure of force through optimal ratio.

Model	Safe Working Load (kg)	Height of Load (mm)	Lifting Height (mm)	Height of Claw In Lowest Position (mm)	Net Weight (kg)
HVS-1.5	1500	725	350	70	12
HVS-3	3000	725	350	75	20
HVS-5	5000	725	300	70	24
HVS-10	10000	800	300	90	42
HVS-20	20000	800	340	95	60
HKB-1.5	1500	570	300	70	11
HKB-3	3000	570	300	75	18
HKB-5	5000	600	300	70	22
HKB-10	10000	650	300	80	38



## Steel Jack HAS series

### with adjustable lifting claw

- Suitable for lifting loads of any type
- For a variety of lifting points
- Low expenditure of force through optimal ratio
- Lifting claw adjustable in 6 positions
- Lift completely usable
- Large base plate

Model	Safe Working Load (kg)	Height of Load (mm)	Lifting Height (mm)	Height of Claw In Lowest Position (mm)	Net Weight (kg)
HAS-3	3000	720	350	69	25
HAS-5	5000	720	300	64	30
HAS-10	10000	792	300	85	48
HAS-15	15000	805	285	120	63



## Safety Ratchet Crank T series

### To be supplied as an option of steel jacks

Model	Suitable for use with	Arm Length (mm)	Handle Length (mm)
T250	1.5 to 5 tonne steel jacks	250	130
T300	10 to 20 tonne steel jacks	300	250





## Forklift Jack HL-FJ Series

- High capacity and rugged construction.
- Extra low pick up point and 2-position lift pad for hard-to reach places under low profile lift trucks.
- Special designed hydraulic pump with German seal kits and overload valve.
- Removable handle and compact size.
- **Conforms to CE standard and ANSI standard.**



HL-FJ400



HL-FJ700

Model		HL-FJ400	HL-FJ700
Rated Capacity	(kg/lbs)	4000/8800	7000/15400
Min. Lifting Height	(mm)	65/2-1/2"	65/2-1/2"
Max. Lifting Height	(mm)	406/16"	420/16-1/2"
Width	(mm)	203mm/8"	250mm/10"
Net Weight	(kg/lbs)	33/72.6	49/107.80
Gross Weight	(kg/lbs)	35/77	53/116.60

## Forklift Jack HL-FJ500

- **Uniquely built in two lifting speeds.**  
Quick lifting and slow lifting which can be automatically switched between with load and without load.  
Quick lifting: 20 times pump strokes.  
Slow lifting: 60 times pump strokes.
- **Two alternative lifting positions.**  
Low position: capacity 4000kg.  
High position: capacity 5000kg.
- **Built in overload valve and bypass valve.**  
Guarantees safety and reliable operation.
- **Low profile lifting: 65mm.**



HL-FJ500

Model	HL-FJ500		
		Low position	High position
Lifting Position			
Lifting Capacity	(T)	4	5
Min. Lifting Height	(mm)	425	724
Max. Lifting Height	(mm)	65	416
Pump Stroke to Max. Height		60	60
Overall Dimensions	LxWxH (mm)	690x210x1190	690x210x1190
Net Weight	(kg)	45	45

## Forklift Support Stand HT series

- HT-6 Capacity 12ton per pair Heavy duty design and wide base.
- HT-7 Capacity 13ton per pair Heat treated heavy-duty holding pins.
- HT-9 Capacity 18ton per pair Provide to support forklifts or heavy machinery.



Shown HFJ-400 forklift jack in use with support stand HT-7



Shown HFJ-700A forklift jack in use with support stand HT-9



HT-9 Stand



HT-7 Stand

Model		HT-6	HT-7	HT-9
Used with Forklift Jack		HL-FJ500	HL-FJ400	HL-FJ700
Capacity/Pair	(tonne)	12	14	18
Adjustable Range	(mm)	242-420	242-400	242-415
Net Weight	(kg)	13	13	15

**Note:** Sold in pairs only

## Toe Jack HL-TG Series

### Professional class

- Super low profile lifting toe
- Adjustable Lifting toe
- Heavy duty structure



HL-TG30



HL-TG80

Model		HL-TG30	HL-TG80
Capacity	(tonne)	3	8
Lifting Stroke	(mm)	140	140
Min. Toe Height	(mm)	15	20
Lifting Range	(mm)	15-155	20-160
Net Weight	(kg)	21.5	28

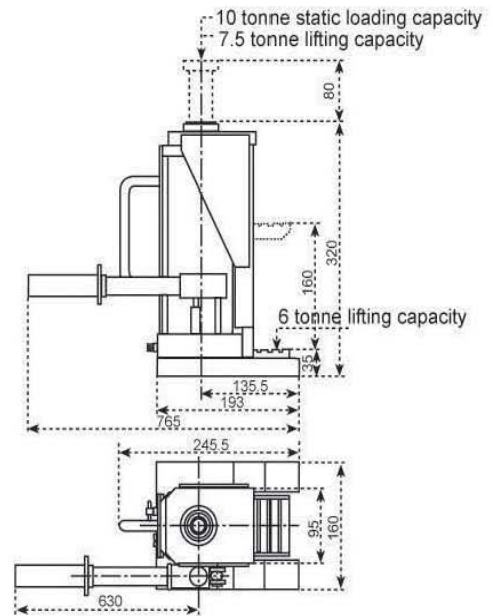
## Machinery Jack HL-TB100

Professional class

- Conforms to CE safety standard.



TB100



Static loading capacity on top 10 tonne

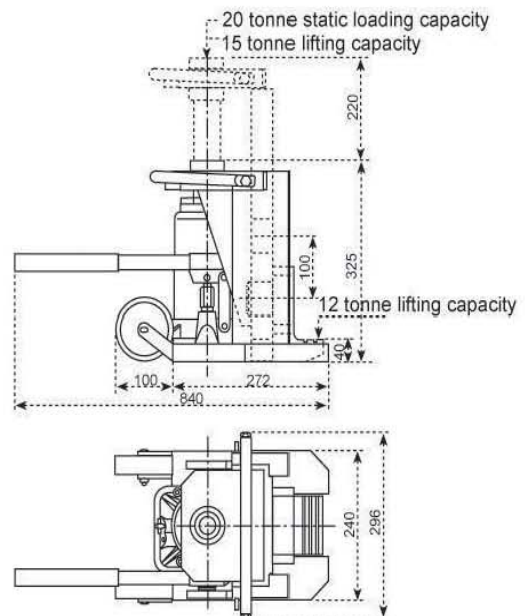
Model	Lifting Capacity		Lifting Stroke	Lifting Range of Top	Min. Loading Height Using Lifting Toe	Min. Loading Height Using Lifting Toe at Max. Adjustment	Lifting Range of toe	Net Weight
	on top	on toe						
HL-TB100	7.5 tonne	6 tonne	160 mm	320-560 mm	35 mm	160 mm	35-195 mm	25 kg

## Machinery Jack HL-TB200

Professional class



TB200



Static loading capacity on top 20 tonne

Model	Lifting Capacity		Lifting Stroke	Lifting Range of Top	Min. Loading Height Using Lifting Toe	Lifting Range of toe	Net Weight
	on top	on toe					
HL-TB200	15 tonne	12 tonne	140 mm	325-545 mm	40 mm	40-260 mm	69 kg



## Floor Jack HF series

- Features a one-piece lift arm with dual leveling mechanism and reinforced flanged side frames for added strength under load.
- Patented safety bypass system prevents overextension and accidental overloading.
- Double swivel saddle and heavy steel casters allow safe, easy positioning.



Model	Capacity (kg)	Min./Max. Height (mm)	Overall Size (mm)	Packing Size (mm)	Net Weight (kg)	Safety Std.	Application
HF20A	2000	135/385	550x212x140	555x235x155	12	CE/GS	Light duty
HF20D	2000	135/342	471x199x135	480x210x145	9.5	CE/GS	
HF23A	2250	135/385	550x212x140	555x235x155	13	ANSI/ASME	
HF30A	3000	135/395	628x252x168	640x267x179	19	CE/GS	
HF23B	2250	135/490	693x346x176	735x386x181	34	CE/GS	Heavy duty
HF30B	3000	135/490	660x346x180	738x385x203	36	CE/GS	

## Long Chassis Service Jacks HF series

### Professional class

- Welded base and cylinder to assure strength and eliminated leaks.
- Chromed pump piston and ram for added rust resistance.
- Foot pedal brings saddle up to load quickly.
- **Meets ANSI/ASME PALD standard & CE/GS standard.**



Model		HF20C	HF30C	HF50C	HF50H	HF100C	HF100H
Capacity	(tonne)	2	3	5	5	10	10
Max. Saddle Height	(mm)	800	600	560	685	560	685
Min. Saddle Height	(mm)	140	130	150	150	160	160
Net Weight	(kg)	58	70	95	95	145	145



## Foldable Shop Crane HL-SC•A Series

- Unique technology of quick lifting by double action pump.
- Larger capacity than normal shop cranes at 3 position.
- Chrome plated lifting piston and pump piston.
- Relief valve to prevent overload.
- 360° swivel operating handle.
- Forged heavy duty swivel hook.
- 125% overload testing before delivery.
- **Conforms to CE safety standard.**



*New deadmen lowering system !*



HL-SC500A



HL-SC1000A



HL-SC2000A

### Shop crane folded



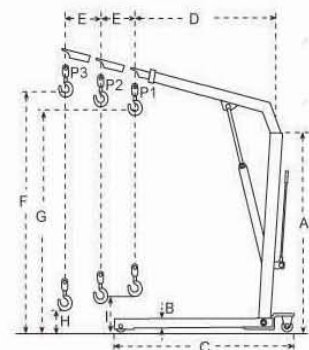
HL-SC500A



HL-SC1000A



HL-SC2000A



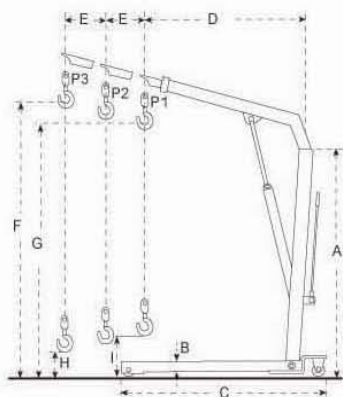
Model	Capacity at Position (kg)			Dimensions (mm)								Overall Width (mm)	Net Weight (kg)	
	P1	P2	P3	A	B	C	D	E	F	G	H			I
HL-SC500A	500	425	350	1410	165	1510	895	102	2120	1960	150	340	970	75
HL-SC1000A	1000	800	700	1675	90	1630	1230	150	2445	2330	—	245	1120	115
HL-SC2000A	2000	1700	1500	1690	205	1900	1290	150	2705	2505	—	230	1165	165

## Foldable Shop Crane HL-SC•B Series

- Unique technology of quick lifting by double action pump.
- Larger capacity than normal shop cranes at 3 position.
- Chrome plated lifting piston and pump piston.
- Relief valve to prevent overload.
- 360° swivel operating handle.
- Forged heavy duty swivel hook.
- 125% overload testing before delivery.
- Delivered flat packed for saving space.
- **Conforms to CE safety standard.**



New deadmen lowering system !



Disassembled frame

Model	Capacity at Position (kg)			Dimensions (mm)									Overall Width (mm)	Net Weight (kg)
	P1	P2	P3	A	B	C	D	E	F	G	H	I		
HL-SC500B	500	425	350	1410	165	1510	895	102	2120	1960	150	340	970	75
HL-SC1000B	1000	800	700	1675	90	1630	1230	150	2445	2330	—	245	1120	115
HL-SC2000B	2000	1700	1500	1690	205	1900	1290	150	2705	2505	—	230	1165	165